



# CleverTEC

CONNECTING AI

## CTS40F

### PRODUCT GUIDE



140°  
Wide Angle



1080P



Video Recorder



Aperture F2.0

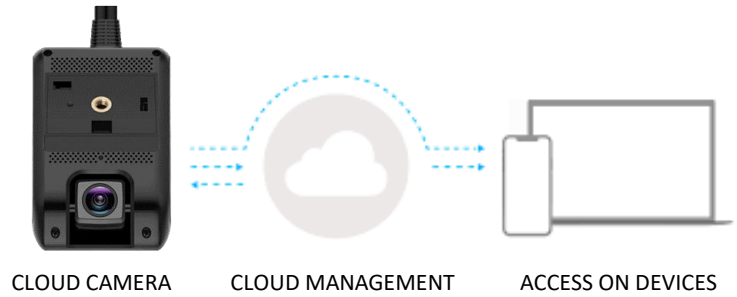


6 Glass Lens

# Summary

The CTS40F is the most advanced Android dual dash camera with revolutionary features inclusive of 1080p HD video, 4G connectivity and all the information required to professionally manage your fleet. CTS40F records Mileage, Routes taken, Idle vehicles, Driver league & Risk behaviour analysis.

## INSTANT FNOR NOTIFICATIONS



## Complete Features



### CAMERA

Full 1080p HD video with 140° viewing angle lens with an incorporated driver camera. Additional option of internal or rear 2nd camera.



### LIVE VIEWING

View live footage of camera from any iOS or Android device.



### GPS TRACKING

Live location updates and historical route tracking.



### EVERYTHING CLOUD

Flexible easy to manage vehicle alerts function with complete fleet tracking, driver scoring, vehicle data plus more and all stored within your own cloud hub.



### EVENT REPORTS

Produce in-depth reports including images, motion, location & speed data.



### OUT OF HOUR ALERTS

Receive alerts if the vehicle is driven out of permitted times.



### LTE CONNECTIVITY

With multi-network roaming as standard this product takes stability to a new level, resulting in virtually no connection dropouts unlike other connected Dashcams.



### android Operating Systems



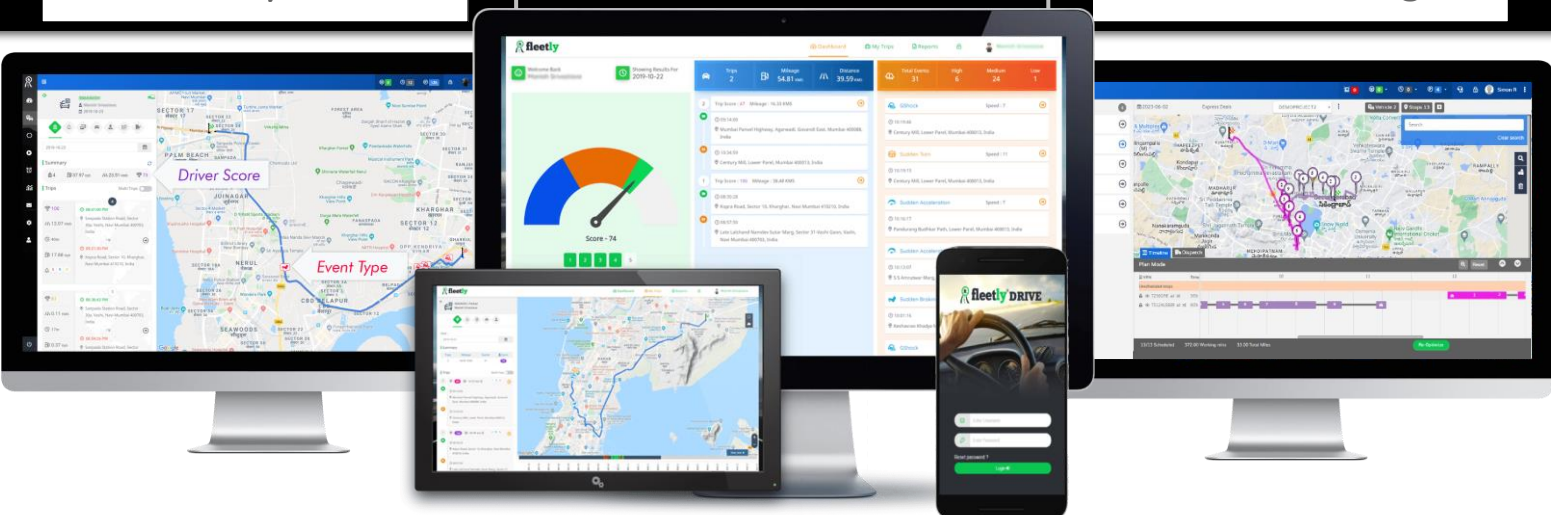
### WAKE UP FUNCTION

This is UK's first known Dashcam with "Wake Up". Footage retrieval is now possible on Powered down/Parked or even impounded vehicles.

## Driver Behaviour Analysis

## Mobile App & Website

## Route Optimization & Scheduling





# Incidents

The 'Incidents' dashboard is divided into two main sections. On the left, a sidebar lists various events, including geofence entries and vehicle status changes. The main area on the right displays a detailed view of a specific incident titled 'AP39TY6789 - Vibration'. This view includes a table with columns for Incident, Driver, and Vehicle, and a large satellite map showing the location of the incident at 53 Park Ln, London W1K 1QA, United Kingdom. The map is overlaid with various location markers and labels for nearby businesses and landmarks.

# Evidence

The 'Evidence' dashboard provides a detailed view of evidence collected during an incident. It features a table with columns for Type, File name, Added by, Date, Address, and Action. Below the table, there is a section for 'All Routes (9)' with search filters and a progress indicator showing 'Completed: 0/47', 'Failed: 0/47', and 'Outstanding: 47/47'. A map on the right shows a route through a city area with numbered stops. A video recording of a vehicle is displayed in the foreground, showing a dark car driving on a street. The video timestamp is '23-04-19 12:46:56 CTS40F'.

Our portal presents cutting-edge technology tailored to empower medium to large organizations in managing fleet risk and incidents with unparalleled efficiency and precision.

# Contents in the box:



Forward Facing Dual Camera



GPS Antenna



Power Supply

## Optional additions



Micro SD Card



Micro SIM Card



User Guide



2<sup>nd</sup> Camera Cable

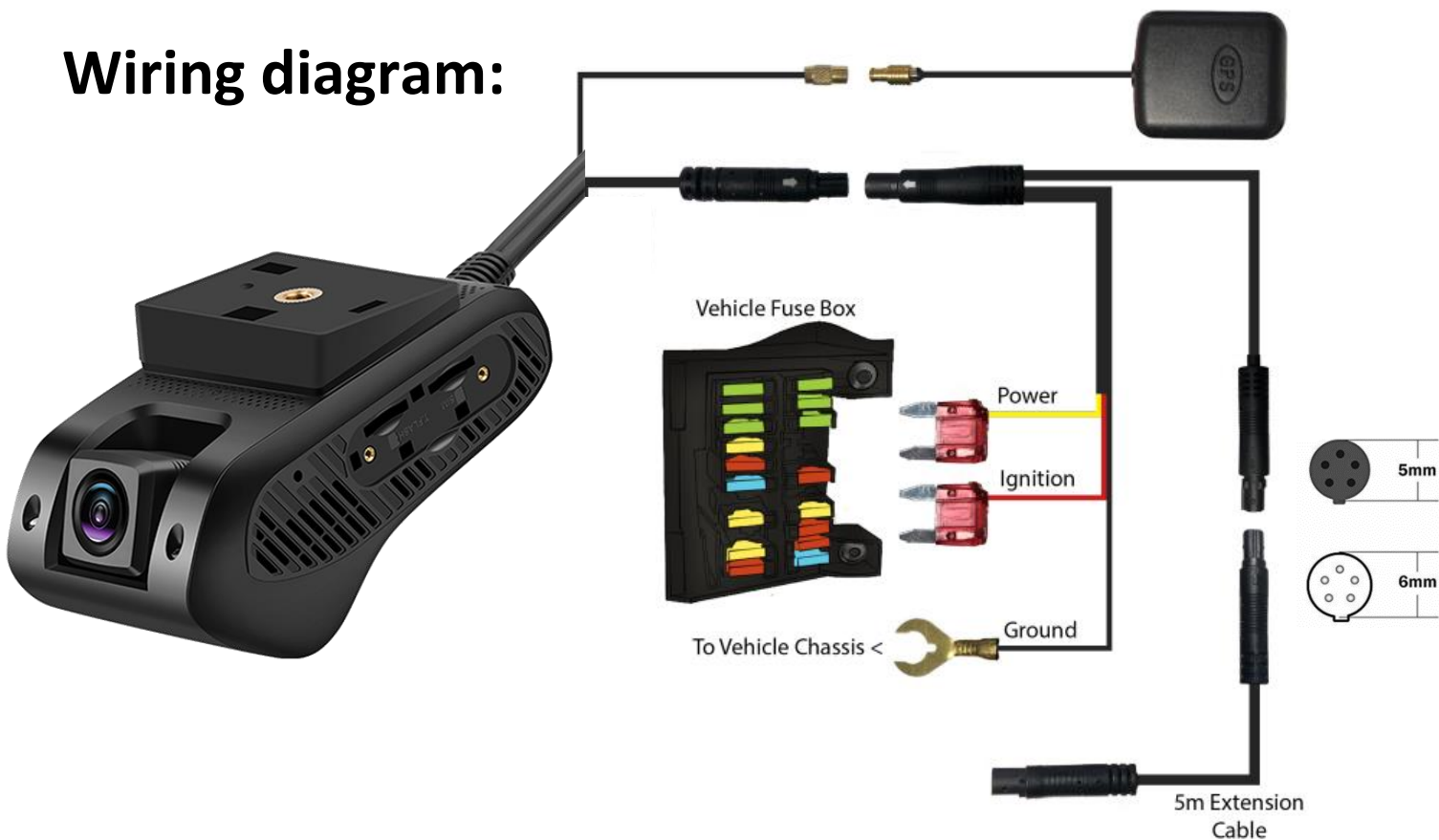


Cable clips



Cable ties

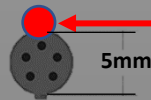
## Wiring diagram:



# Camera Details:

## Built-in SSD Memory...

No More missing footage due to faulty SD cards. Our **CTS40F** operates with a built in Solid State hard drive allowing a maximum of 256GB of immediate backup for recording!



5mm

Camera Cable Power/Video Termination

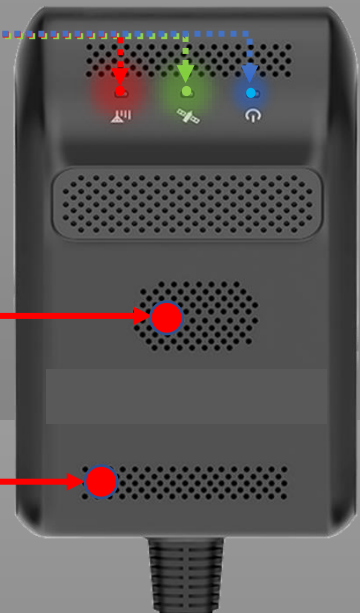
Plate Mount for Adhesive Pad

GPS Antenna

Adjustable 2.8mm Lens 140° Pillar to Pillar view

Power Indicator      GPS Signal      4G Signal Status

Microphone & Speakers



Tamperproof SIM & SD Card Slot

Proportionate Heat & Air Vents



Optional Additional Camera

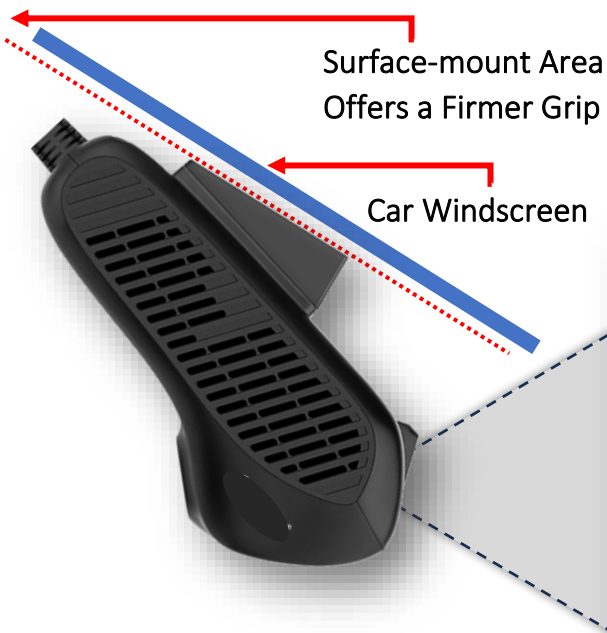


# Camera Positioning:



Before attaching the CTS40F to the windscreen, it is a must that the screen is clean and clear of any types of greasy marks.

As illustrated the CTS40F has an optimum pillar to pillar capture view of 140°.



## CTS40F 140° Front View:



# Extended Features:

## **Forward Facing Camera**

Compact and sleek design, 4g/LTE connected camera with loop recording inside and outside of your vehicle to provide video surveillance for safety and driver coaching.

## **Driver Behaviour / Eco-Driving**

Inbuilt 6-Axis accelerometer leveraging quality data collection on driver behaviour events such as harsh acceleration, harsh brake, harsh turning to help reduce incidents and improve fuel economy of your fleet.

## **Emergency / Panic Button**

The button event can be used for multiple use cases although the standard use case is an emergency. Button event by default upload footage to the cloud.

## **Dual Recording and Event Video Safety**

CTS40F 1080p simultaneously records footage to both storage streams. Standard definition (SD) media recorded to inbuilt storage whereas high-definition (HD) media stored to TF SD card.

## **Remote Monitoring**

CTS40F 1080p camera connects with native live stream media server to provide real time monitoring of video surveillance of a vehicle.

## **Playback Stream**

CTS40F 1080p dash camera connects with playback media server which allows you to search recorded videos of approximately 23 hours of travel time.

## **Geo-fencing**

Fleetly platform geo-fencing module has advanced fencing features which allow fleet managers to draw fences on map and definite rules to get notified by preferred communication methods.

## **Extensibility**

CTS40F 1080p Camera comes with RS-232 I/O port to extend additional port to connect Driver ID, Fuel Sensor, Temperature sensor or load sensor.

# Technical Specification:

<b>Outward Camera</b>		
AHD (horizontal viewing angle)		140 degrees
Standard Resolution		1080p
Standard Frame Rate		25 FPS
Video Format		H.264
<b>Inward Camera</b>		
AHD (horizontal)		100 degrees
Standard Resolution		720p
Standard Frame Rate		25 FPS
Video Format		H.264
<b>Sensors</b>		
G Sensor		Accelerometer, Gyroscope (6- Axis)
GPS Module		GPS/BDS/GLONASS
Night Vision		Yes
<b>Connectivity</b>		
Wireless		2.4 GHz 802.11b/g/n
Bluetooth		Yes
LTE Module		NA/EU/ASIA (GSM / WCDMA / 4G)
<b>Hardware</b>		
CPU		ARM Cortex A53 @ 1.44GHz
Built-in Storage		32 GB (ROM – LPDDR3 1GB)
SD Card Storage		Max 256GB
Battery/Power		DC 9v-30v
External Battery		450mAh
MIC & Speaker		Built-in
W/H/D		109mm x 69mm x 52mm
Weight		224g
<b>I/O Configuration</b>		
ACC		Ignition Detection
Relay		Immobilization (remote cut-off)
Extended I/O		RS-232
<b>Software</b>		
Operating System		Android
Firmware		8.1 Go
<b>Durability</b>		
Operating Temperature		-20°C to +70°C





**WARNING!** The first time the camera is initialised it must be left to run completely without interruption or cut out for a recommended 10 minutes. This will allow the full configuration to communicate back to the server.



GPS Tracking



Geo Fencing



Live Tracking



Ignition Status



Panic Button



Remote Monitoring



# CleverTEC

C O N N E C T I N G A I

For more information or Technical Support on this product please contact us on:

T: 03337 726 168

E: [info@clevertecsystems.com](mailto:info@clevertecsystems.com)

W: [clevertecsystems.com](http://clevertecsystems.com)