

CleverTEC

CONNECTING AI

CTS40D

PRODUCT GUIDE



Wide Angle



1080P



Video Recorder



Aperture F2.0

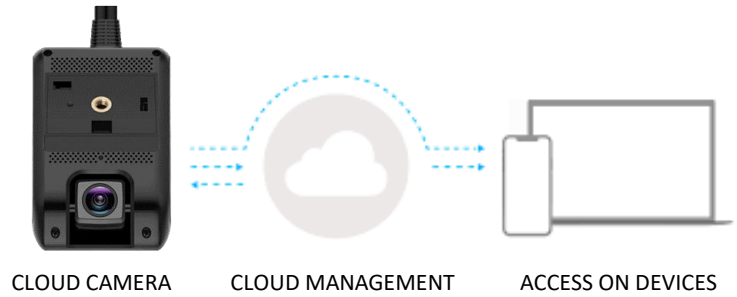


6 Glass Lens

Summary

The CTS40D is the most advanced Android dual dash camera with revolutionary features inclusive of 1080p HD video, 4G connectivity and all the information required to professionally manage your fleet. CTS40D records Mileage, Routes taken, Idle vehicles, Driver league & Risk behaviour analysis.

INSTANT FNOL NOTIFICATIONS



Complete Features



CAMERA

Full 1080p HD video with 140° viewing angle lens with an incorporated driver camera. Additional option of internal or rear 2nd camera.



LIVE VIEWING

View live footage of camera from any iOS or Android device.



GPS TRACKING

Live location updates and historical route tracking.



EVERYTHING CLOUD

Flexible easy to manage vehicle alerts function with complete fleet tracking, driver scoring, vehicle data plus more and all stored within your own cloud hub.



EVENT REPORTS

Produce in-depth reports including images, motion, location & speed data.



OUT OF HOUR ALERTS

Receive alerts if the vehicle is driven out of permitted times.



LTE CONNECTIVITY

With multi-network roaming as standard this product takes stability to a new level, resulting in virtually no connection dropouts unlike other connected Dashcams.



android Operating Systems



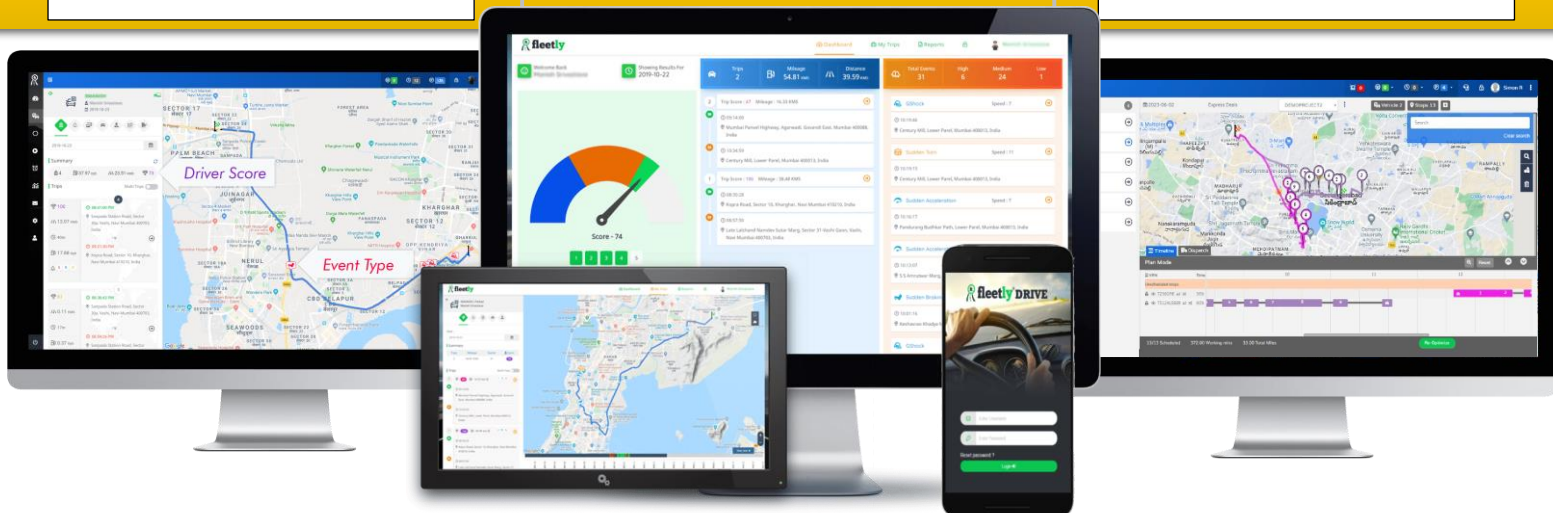
WAKE UP FUNCTION

This is UK's first known Dashcam with "Wake Up". Footage retrieval is now possible on Powered down/Parked or even impounded vehicles.

Driver Behaviour Analysis

Mobile App & Website

Route Optimization & Scheduling



Incidents

The 'Incidents' dashboard is divided into two main sections. On the left is a sidebar with a list of incidents, including 'OLA India', 'AP39TY6789 (Vibration)', and several 'Enter Geofence Area' events. On the right, the 'Overview' tab for incident 'AP39TY6789 - Vibration' is active. It displays a table with columns for Incident, Driver, and Vehicle. Below the table is a satellite map of a city area with various landmarks like 'Catholic Church of the Immaculate...', 'Blackstone London', and 'The Chesterfield Mayfair'. At the bottom right of the map area are buttons for 'Assigned', 'Actions', and 'Add Notes'.

Incident	Driver	Vehicle
0	Gina F23un 91-8897078607	AP39TY6789 Car
23-Sep-2019 12:25:36	53 Park Ln, London W1K 1QA, United Kingdom	53 Park Ln, London W1K 1QA, United Kingdom

Evidence

The 'Evidence' dashboard features a table of evidence items, a map of a route, and a video player. The table has columns for Type, File name, Added by, Date, Address, and Action. The map shows a route through a city area with various landmarks and a video player showing a car on a street. The video player has a timestamp of '23-04-19 12:46:56 CTS40D'.

Type	File name	Added by	Date	Address	Action
Command -			23-Sep-2019 12:46:46	53 Park Ln, London W1K 1QA, United Kingdom	Declined!

Our portal presents cutting-edge technology tailored to empower medium to large organizations in managing fleet risk and incidents with unparalleled efficiency and precision.

Contents in the box:



Forward Facing Dual Camera



GPS Antenna



Power Supply

Optional additions



Micro SD Card



Micro SIM Card



User Guide



2nd Camera Cable

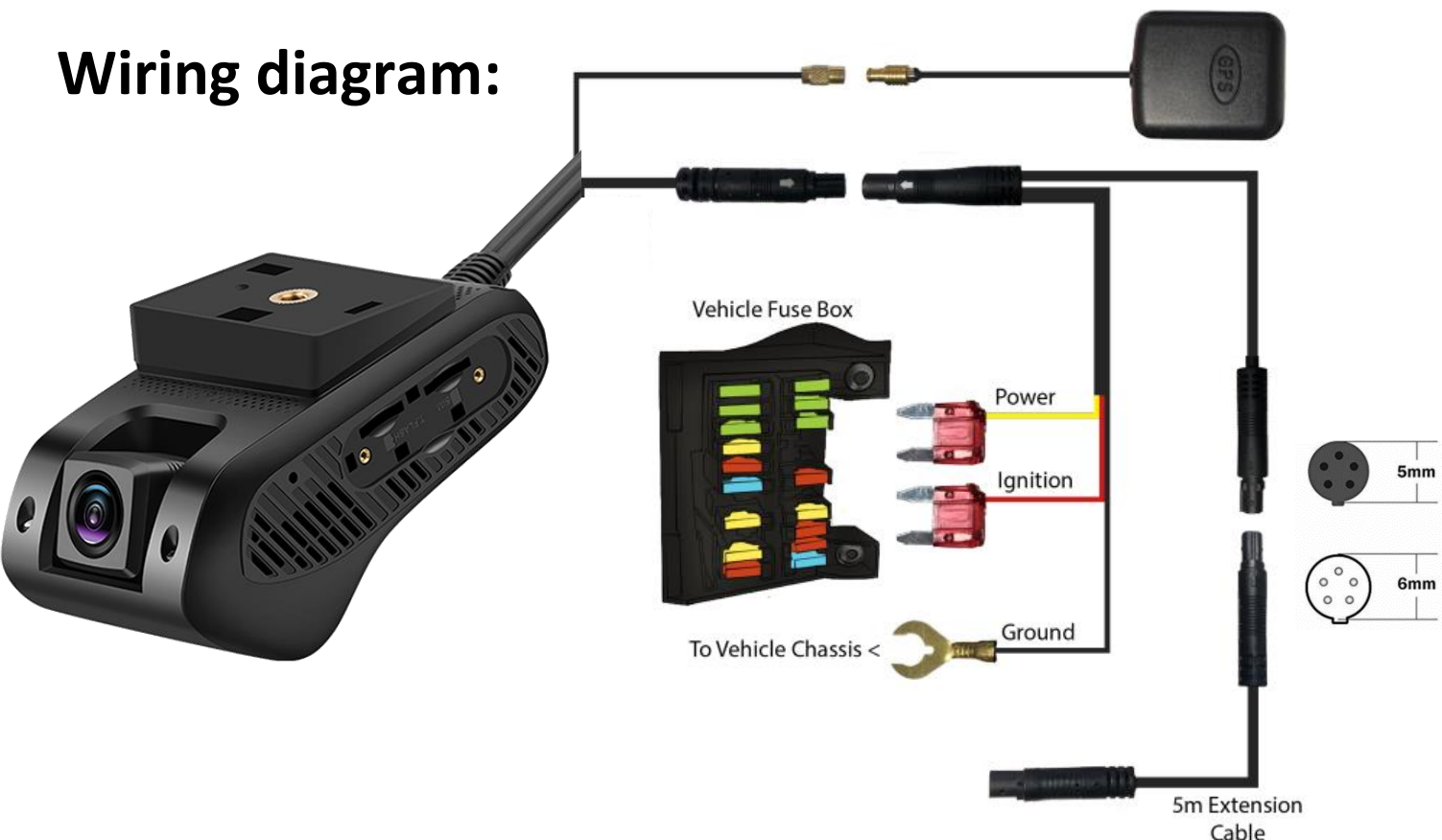


Cable clips



Cable ties

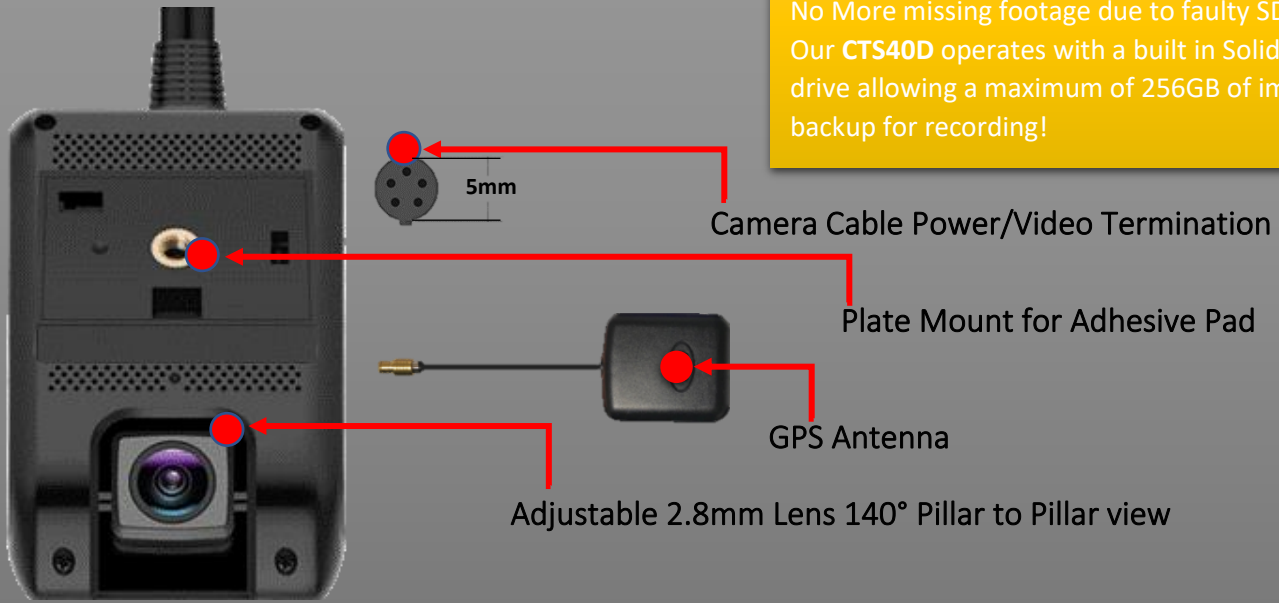
Wiring diagram:



Camera Details:

Built-in SSD Memory...

No More missing footage due to faulty SD cards. Our CTS40D operates with a built in Solid State hard drive allowing a maximum of 256GB of immediate backup for recording!

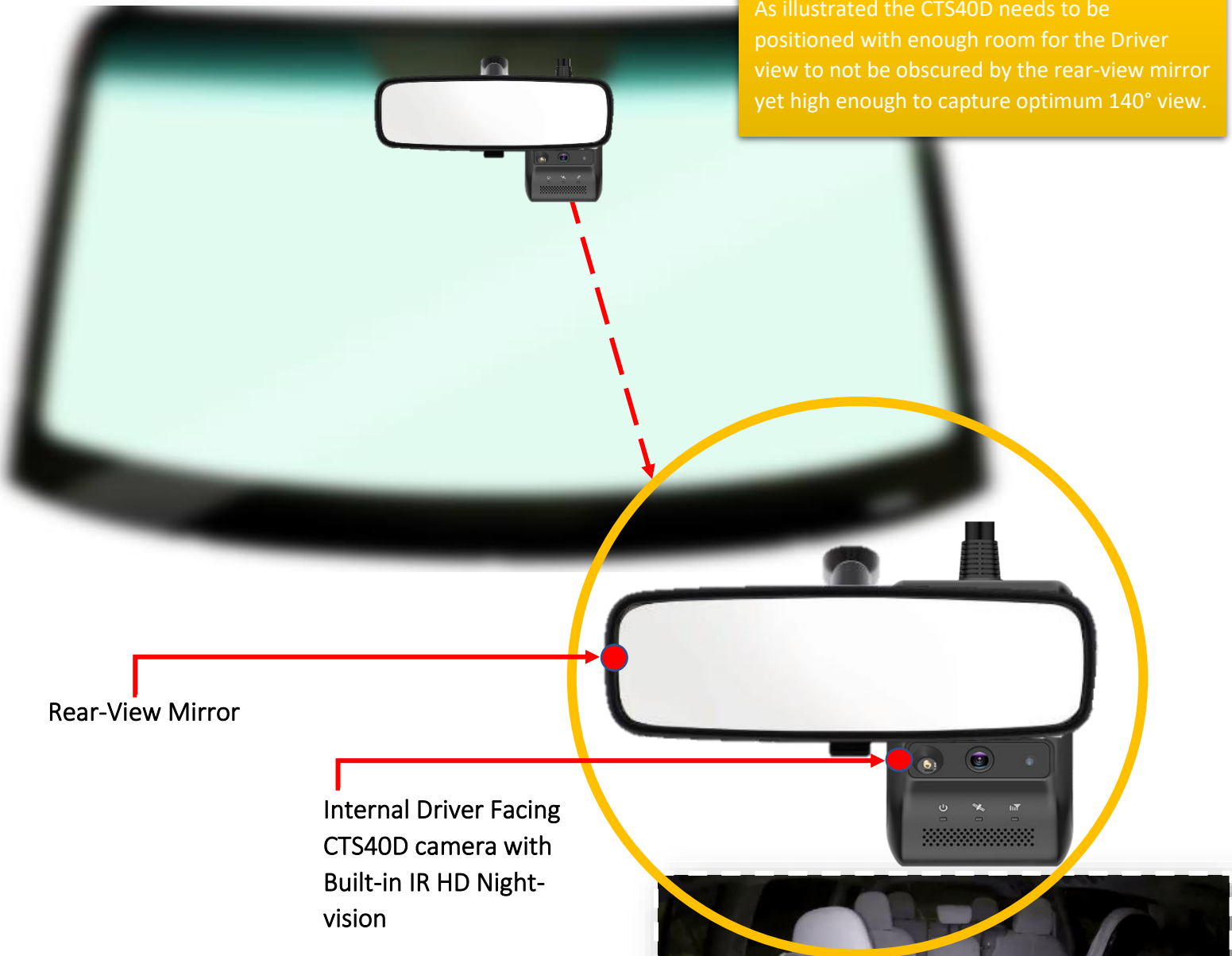


Camera Positioning:



Before attaching the CTS40D to the windscreen, it is a must that the screen is clean and clear of any types of greasy marks.

As illustrated the CTS40D needs to be positioned with enough room for the Driver view to not be obscured by the rear-view mirror yet high enough to capture optimum 140° view.

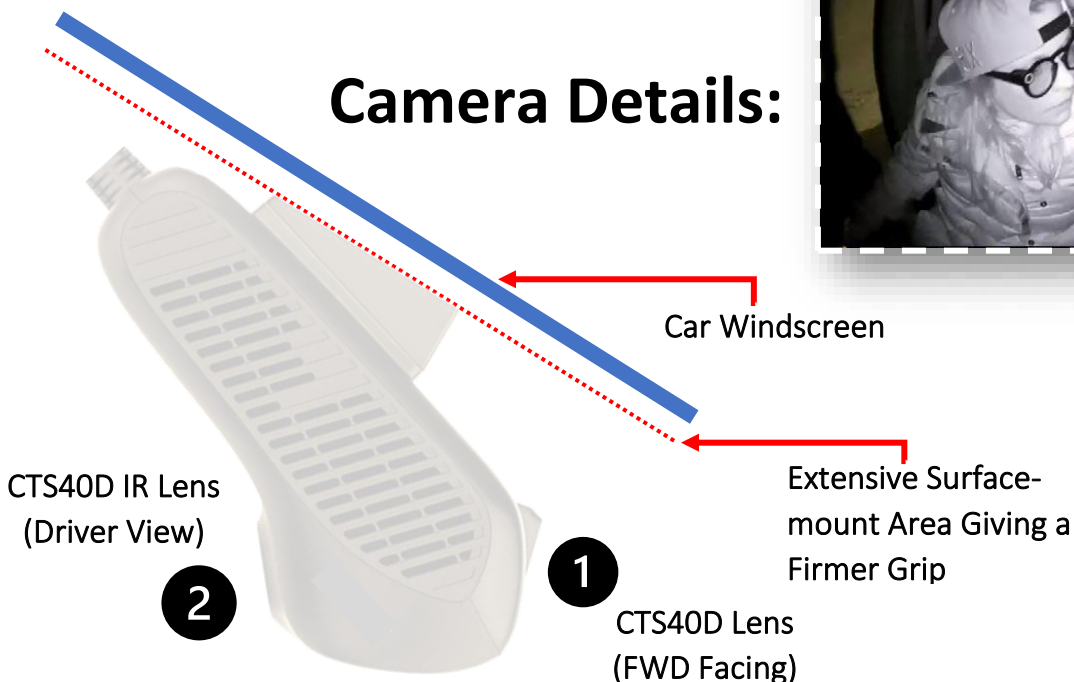


Rear-View Mirror

Internal Driver Facing CTS40D camera with Built-in IR HD Night-vision



Camera Details:



Car Windscreen

Extensive Surface-mount Area Giving a Firmer Grip

CTS40D IR Lens (Driver View)

2

1

CTS40D Lens (FWD Facing)



The CTS40D has been designed with windscreens in mind. False positives due to falling cameras are not only an annoyance for reporting and FNOL but can also be extremely hazardous for drivers and other road users when falling whilst vehicles.

Extended Features:

Dual Camera

Compact and sleek design, 4g/LTE connected dual camera with loop recording inside and outside of your vehicle to provide video surveillance for safety and driver coaching.

Driver Behaviour / Eco-Driving

Inbuilt 6-Axis accelerometer leveraging quality data collection on driver behaviour events such as harsh acceleration, harsh brake, harsh turning to help reduce incidents and improve fuel economy of your fleet.

Emergency / Panic Button

The button event can be used for multiple use cases although the standard use case is an emergency. Button event by default upload footage to the cloud.

Dual Recording and Event Video Safety

CTS40D 1080p simultaneously records footage to both storage streams. Standard definition (SD) media recorded to inbuilt storage whereas high-definition (HD) media stored to TF SD card.

Remote Monitoring

CTS40D 1080p camera connects with native live stream media server to provide real time monitoring of video surveillance of a vehicle.

Playback Stream

CTS40D 1080p dash camera connects with playback media server which allows you to search recorded videos of approximately 23 hours of travel time.

Geo-fencing

Fleetly platform geo-fencing module has advanced fencing features which allow fleet managers to draw fences on map and definite rules to get notified by preferred communication methods.

Extensibility

CTS40D 1080p Camera comes with RS-232 I/O port to extend additional port to connect Driver ID, Fuel Sensor, Temperature sensor or load sensor.

Technical Specification:

Outward Camera		
AHD (horizontal viewing angle)		140 degrees
Standard Resolution		1080p
Standard Frame Rate		25 FPS
Video Format		H.264
Inward Camera		
AHD (horizontal)		100 degrees
Standard Resolution		720p
Standard Frame Rate		25 FPS
Video Format		H.264
Sensors		
G Sensor		Accelerometer, Gyroscope (6- Axis)
GPS Module		GPS/BDS/GLONASS
Night Vision		Yes
Connectivity		
Wireless		2.4 GHz 802.11b/g/n
Bluetooth		Yes
LTE Module		NA/EU/ASIA (GSM / WCDMA / 4G)
Hardware		
CPU		ARM Cortex A53 @ 1.44GHz
Built-in Storage		32 GB (ROM – LPDDR3 1GB)
SD Card Storage		Max 256GB
Battery/Power		DC 9v-30v
External Battery		450mAh
MIC & Speaker		Built-in
W/H/D		109mm x 69mm x 52mm
Weight		224g
I/O Configuration		
ACC		Ignition Detection
Relay		Immobilization (remote cut-off)
Extended I/O		RS-232
Software		
Operating System		Android
Firmware		8.1 Go
Durability		
Operating Temperature		-20°C to +70°C



WARNING! The first time the camera is initialised it must be left to run completely without interruption or cut out for a recommended 10 minutes. This will allow the full configuration to communicate back to the server.



GPS Tracking



Geo Fencing



Live Tracking



Ignition Status



Panic Button



Remote Monitoring



CleverTEC

C O N N E C T I N G A I

For more information or Technical Support on this product please contact us on:

T: 03337 726 168

E: info@clevertecsystems.com

W: clevertecsystems.com